



OPERATOR'S MANUAL



ATP SERIES **[ADAPTIVE TRAINING PISTOLS]**

TABLE OF CONTENTS

Use of this manual2

Safety Guidelines 2-3

Specifications 4-5

Charging Gas6

Loading BBs7

Loading Magazine8

Loading Chamber8

Select Fire8

Shooting9

Open Slide9

After Shooting..... 10

Hop-Up System10

Hop-Up Adjustment Point 11

Disassembly12

Assembly13

General Maintenance14

Operating Under Unusual Conditions..... 14

Troubleshooting15

Diagrams and Parts Lists 16-22

USE OF THIS MANUAL

Before operating the Airsoft gun, read this manual in its entirety. Important safety topics and tips are discussed throughout all of the chapters. It's important that the operator know the principles of safe gun handling and operation prior to firing the Airsoft gun.

SAFETY GUIDELINES



WARNING! Failure to follow safety guidelines may result in serious injury.

Safety Distance

The effective shooting range is approximately 75 feet. BBs fired from this Airsoft gun may travel further than intended. Make certain that you have an adequate backstop.

Eye Protection

Eye protection should be worn at all times when both shooting and maintaining your Airsoft gun. Protect your eyes from silicone spray and BBs under spring pressure while performing maintenance on your Airsoft gun.

Assume Every Gun is Always Loaded

Until you are certain the chamber is empty, treat every gun as if it were loaded. Do not assume the chamber is empty based on your memory or someone else's words. Always remove the magazine and visually check to confirm the chamber is empty.

Beware of Barrel Obstructions

Ensure the Airsoft gun barrel is free of obstructions before you fire the gun. Even the smallest obstruction such as lubrication or a stuck cleaning patch can cause a misfire or malfunction.

Muzzle Control

Always keep the muzzle of the gun pointed in a safe direction. Never point the muzzle at a person or object that you do not intend to shoot.

Keep Your Safety On

Keep the gun's safety on until your sights are aligned on your target and you are ready to fire.

Keep Your Finger Off The Trigger

Keep your finger off the trigger and out of the trigger guard until your sights are aligned on your target and you are ready to fire.



WARNING! Airsoft BBs can be a choking hazard. Keep them away from children.

SAFETY GUIDELINES

Identify Your Target and Backstop

Before you pull the trigger, make certain of your target and what is beyond it. The Airsoft gun should never be fired at surfaces such as rocks, glass, water, or other hard surfaces where BBs are likely to ricochet in unpredictable directions.



WARNING! Adult supervision is required for any person under the age of 18.

Failure To Fire

If the Airsoft gun fails to fire, misfires, or malfunctions, do not look into the gun barrel. BBs can become lodged into the chamber, and serious eye injury may occur.

Maintain Your Gun Properly

Performing proper maintenance, as outlined in this manual, ensures that your Airsoft gun will be safe to shoot and will perform to its designed specifications for many years. Alterations, modifications or adjustments may damage your Airsoft gun, make it unsafe to shoot, and will void all warranty claims.

Store Your Gun Safely

Always store the Airsoft gun in a safe place, and out of the reach of children. Always transport the Airsoft gun in a carrying case. Never display the Airsoft gun in a public place. Keep the safety engaged, and remove the magazine before storing the Airsoft gun. Note: it is your responsibility to take every reasonable precaution to ensure the safe storage and transportation of your Airsoft gun.

Orange Tip

The orange tip on Airsoft guns helps Law Enforcement distinguish between the replica guns from their real firearm counterparts. Altering the coloration or markings required by state or Federal law so as to make the product look more like a firearm is dangerous and may be a crime. Operator assumes all risks and responsibility when doing so.

Hazards of Being Mistaken for a Real Firearm

Airsoft guns have been mistaken by Police and Law Enforcement as real firearms. A confrontation with law enforcement while carrying an Airsoft gun can result in serious injury or even death. It is strongly advised to operate the Airsoft gun at a safe and legal location. In the event that you are approached by Law Enforcement personnel, you must comply with their instructions immediately to avoid an incident.

Alcohol, Medications, and Drugs

Do not handle or operate your Airsoft gun while under the influence of alcohol, medication or drugs.

Your Responsibility

Your Airsoft gun is well-engineered and manufactured to the highest standards. It was carefully inspected before it was packaged and shipped from our factory. Its safe use depends on you alone. You are the ultimate safety device. Like many other devices, your Airsoft gun is safe unless handled in an irresponsible or uneducated manner.

SPECIFICATIONS

ATP

- Overall Length = 20.5 cm [8.07"]
- Overall Height = 14.5 cm [5.71"]
- Inner Barrel Length = 94 mm
- Inner Barrel Diameter = 6.05 mm
- Weight = 0.70 kg [1.54 lbs]
- Caliber = 6 mm
- Magazine Capacity = 23 rounds
- Velocity = 104-107 MPS [340-350 FPS]
- Energy Output with 0.20g BB = 1.07 Joules
- Gas System = NS2
- Propellant = Green Gas

Special Features:

- Realistic construction and field stripping
- Full metal alloy slide with polymer frame
- Interchangeable back strap
- Extended slide release
- Front and rear slide serrations
- 3-dot combat sights
- Accessory rail
- Adjustable hop-up

*Individual test results may vary depending on brand of BBs, ambient temperature, and chronograph used.

Product Package Contents

- 1 ATP Airsoft gun
- 1 Magazine
- 1 Sample bag of Airsoft BBs
- 1 Hop-Up Adjustment Tool



SPECIFICATIONS

ATP AUTO

- Overall Length = 20.5 cm [8.07"]
- Overall Height = 14.5 cm [5.71"]
- Inner Barrel Length = 94 mm
- Inner Barrel Diameter = 6.05 mm
- Weight = 0.70 kg
- Caliber = 6 mm
- Magazine Capacity = 23 rounds
- Velocity = 104-107 MPS [340-350 FPS]
- Energy Output with 0.20g BB = 1.07 Joules
- Gas System = NS2
- Propellant = Green Gas

Special Features:

- Realistic construction and field stripping
- Full metal alloy slide with polymer frame
- Interchangeable back strap
- Extended slide release
- Front and rear slide serrations
- 3-dot combat sights
- Accessory rail
- Semi and full auto selective fire
- Adjustable hop-up

*Individual test results may vary depending on brand of BBs, ambient temperature, and chronograph used.

Product Package Contents

- 1 ATP AUTO Airsoft gun
- 1 Magazine
- 1 Sample bag of Airsoft BBs
- 1 Hop-Up Adjustment Tool



CHARGING GAS

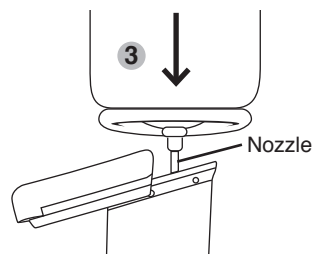
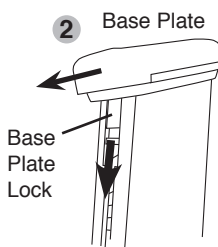
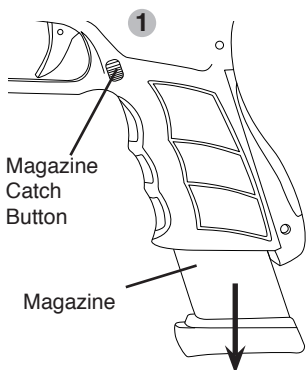
1. Release the magazine by pressing the magazine catch button.
2. Hold the magazine up side down. Release the base plate lock, then gently push the base plate forward to reveal the charging valve.
3. Push the gas canister nozzle into the charging valve. (Make sure both the canister and magazine are inverted and in the vertical position when charging.)
4. Charge the magazine until gas overflows from the charging valve.



WARNING: Sudden impact with a hard surface may cause damage to the magazine.

Note: It is normal to have minor leaking from the charging valve during charging due to high pressure built up inside the magazine. It is recommended to keep the gas release valve slightly oiled. Room temperature is the ideal temperature for shooting. You may experience a delayed action if the surrounding temperature drops below 68° F.

Note: Do not expose the magazine to direct sunlight or incinerate the magazine, as this may cause the magazine to burst. It is strongly recommended to empty the gas from the magazine after shooting. Be certain that the gas does not make contact with eyes or skin while being released, as any contact will cause cold burns.



Green Gas safety tips:

- Check the canister for any cracks or leaks before using.
- Do not expose the canister to temperature over 104° F.
- Do not leave the canister directly over fire.
- Do not heat the canister.
- Keep the canister away from direct sunlight.
- Do not leave the canister in any type of vehicle.

LOADING BBs

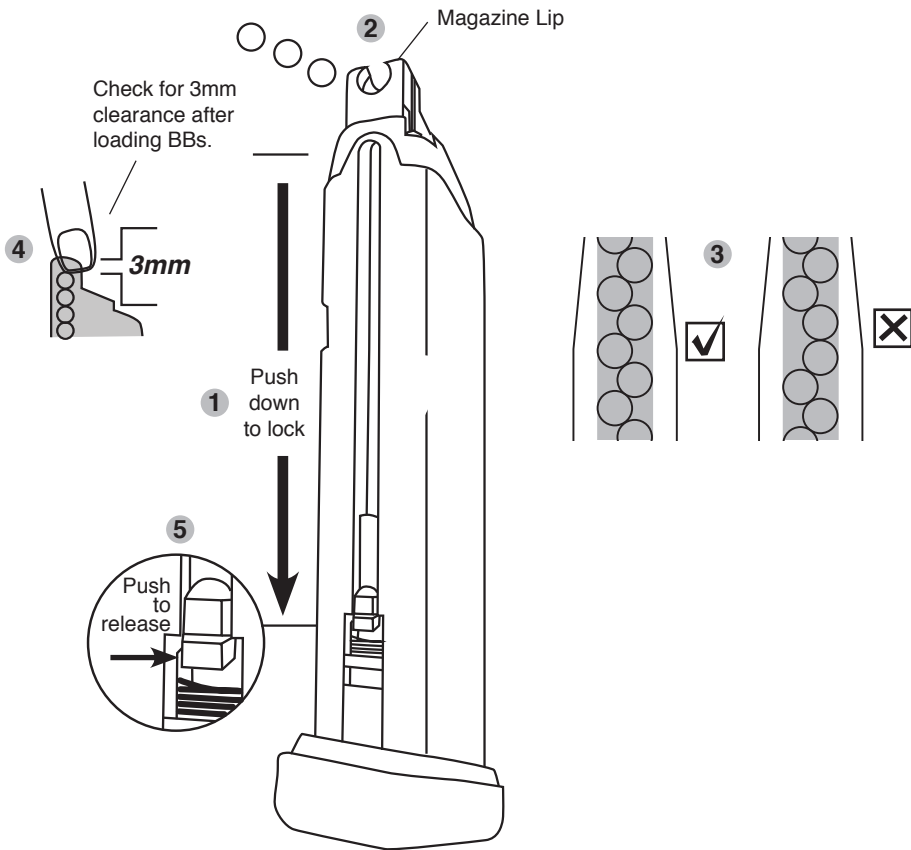
1. Pull the magazine follower down until it locks.
2. Insert BBs into the magazine lip.
3. BBs should stack staggered for maximum round capacity.
4. Make sure to have a 3mm clearance between BBs and the top lip of the magazine.
5. Push the magazine follower lock to release.



WARNING: Always use high quality 6mm BBs, weighing 0.2g or heavier. For best result use 0.25g KWA Perfect BBs. Never use recycled or low grade BBs to prevent damage to your gun.

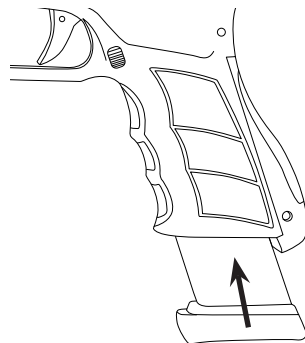


WARNING: Do not release the magazine follower when the magazine is empty. Doing so will damage the magazine and magazine follower.



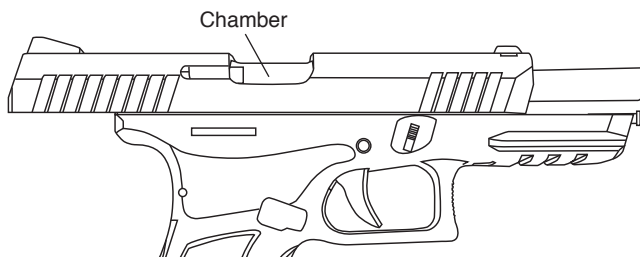
LOADING MAGAZINE

1. Place the magazine back into the magazine well.
2. Push the magazine up until it clicks into a locked position.
3. Pull the magazine down to assure that it has been locked in place.



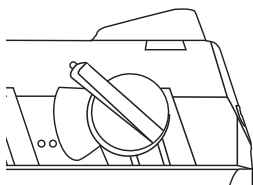
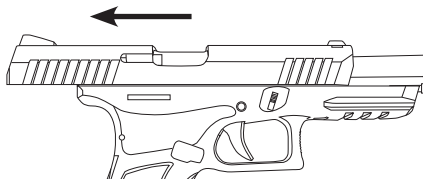
LOADING CHAMBER

Pull the slide to the rear-most position and release the slide. This will automatically load a BB into the chamber and cock the hammer. Skipping this step will cause the gun to fail to fire. The slide will lock open when the last BB is fired and ejected.



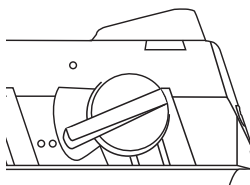
SELECT FIRE (ATP AUTO ONLY)

Note: The slide must be in the rear-most position prior to changing the select fire mode.



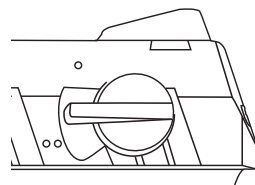
SEMI AUTO

To fire a single round per trigger pull



FULL AUTO

To fire continually until the trigger is released, or magazine empties.



NEUTRAL

Trigger is disengaged.

SHOOTING

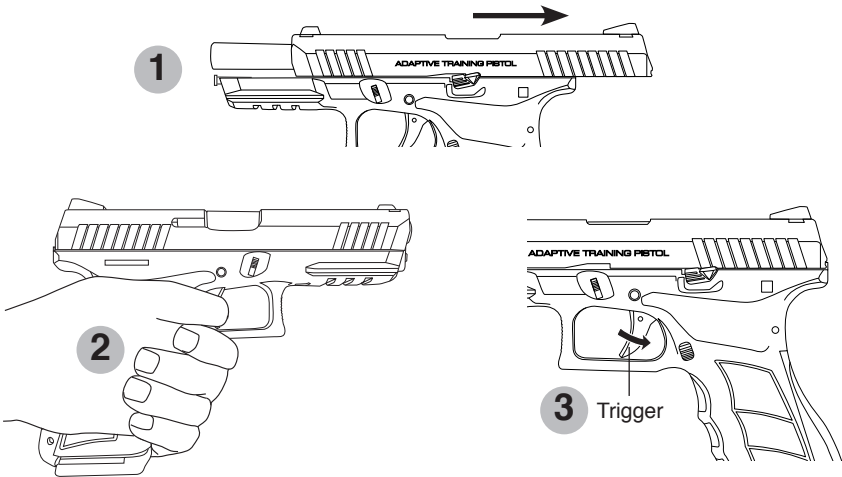
1. Make sure the gun is cocked.
2. Grasp the Airsoft gun in your hand firmly. A two-hand hold with one hand wrapped around the other will help control the Airsoft gun.
3. Squeeze the trigger, the blow back action will load the following BBs automatically as the slide cycles back and forth.



WARNING: Never shoot the gun in a horizontal or upside-down position.



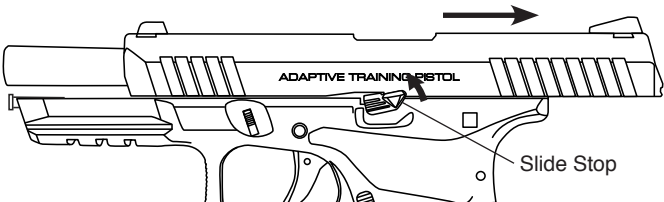
WARNING: Do not fire the pistol without a magazine inserted. Doing so may damage the impact block and result in the loss of the impact pin.



OPEN SLIDE

The slide will remain open after the last BB has been fired and ejected. Remove the empty magazine and replace it with a loaded magazine, then release the slide stop. The first BB will be automatically loaded into the chamber.

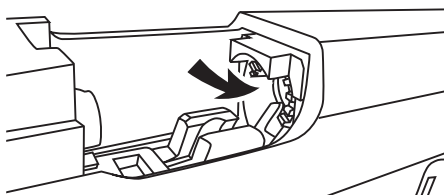
Note: It is important to treat your gun as if it were loaded even when the slide is open.



AFTER SHOOTING

After you are finished shooting, remove the magazine and visually examine the open chamber to check for clearance. Make sure both the magazine and the chamber are clear without BBs.

CHECK
Make sure
chamber is
clear



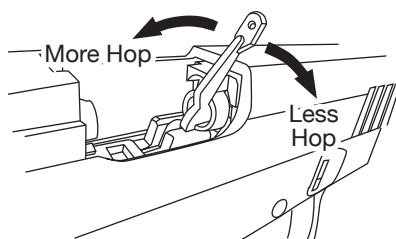
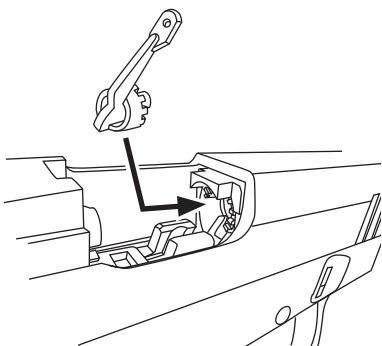
HOP-UP SYSTEM

The Hop-Up device is one of KWA's standard features, giving Airsoft BBs greater stability, further travel and increased accuracy. Airsoft BBs are light-weight and can be affected by wind when fired. With the Hop-Up system, the trajectory of the Airsoft BBs can be adjusted according to the shooting environment or surroundings.











HOP-UP ADJUSTMENT

To adjust the Hop-Up, make sure the magazine is loaded and that you have at least 65 feet of clearance for a test fire before making any adjustments.

1. Test fire the gun for 10 to 20 rounds and observe the BB's traveling pattern.
2. Remove the magazine.
3. Open the slide and place adjusting tool into the slotted chamber ring. Turn the adjusting ring a 1/4-inch at a time.
4. If the BBs are dropping too quickly, move the adjusting ring to the left or counter-clockwise to give the BB more hop. If the BBs are dropping too slowly, move the adjusting ring to the right or clock-wise.
5. Test fire and adjust as needed.



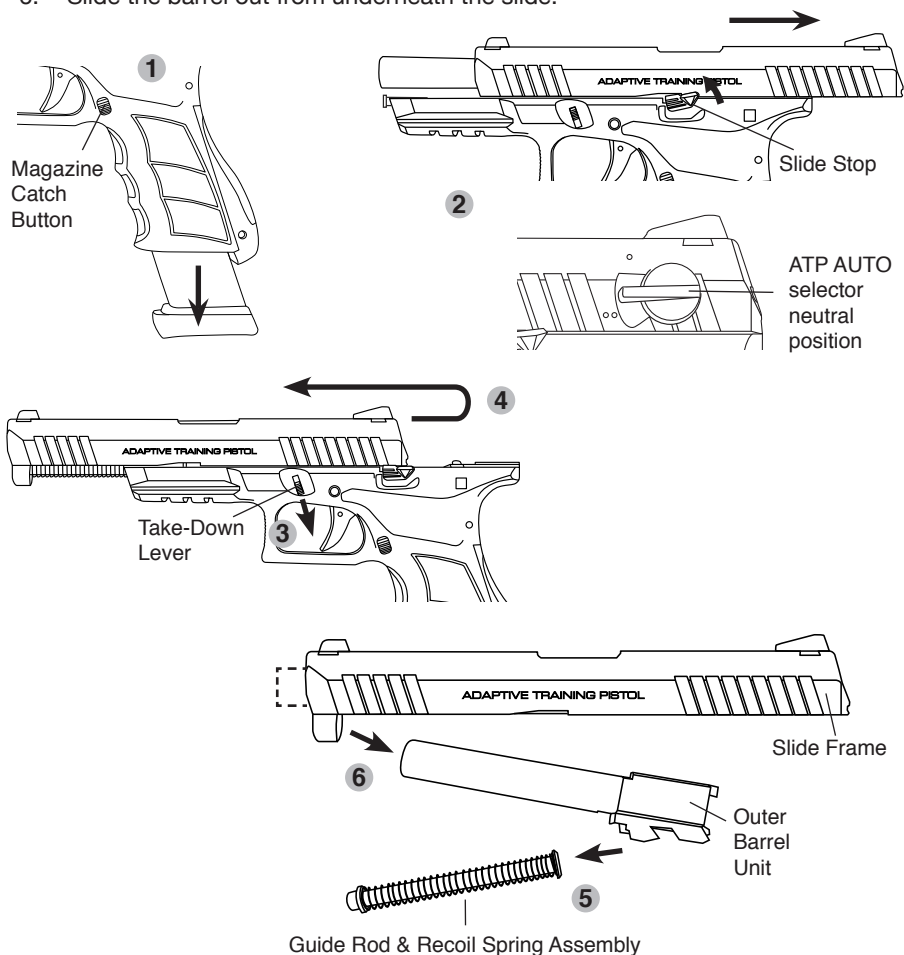
HOP-UP ADJUSTMENT POINT

HOP UP EFFECTIVENESS	BB TRAJECTORY PATTERN		ADJUSTMENTS
<div>NOT EFFECTIVE</div> <div>↑</div> <div>SLIGHTLY</div> <div>↑</div> <div>PROPERLY</div> <div>↑</div> <div>OVERLY</div> <div>↓</div> <div>EXTREMELY EFFECTIVE</div>		BB DROPS FREELY	 TURN KNOB TO LEFT
		BB TRAVELS AT SHORT TRAJECTORY PATH	 TURN KNOB SLIGHTLY TO LEFT
		BB TRAVELS DISTANCE AT FLAT TRAJECTORY PATH	 NO ADJUSTMENT MADE
		BB TRAVELS FLAT IN SHORT DISTANCE, THEN GOES UP IN CURVE AND DROPS FREELY	 TURN KNOB SLIGHTLY TO RIGHT
		BB TRAVELS AT UNSTABLE SPEED AND IRREGULAR PATH	 TURN KNOB TO RIGHT

DISASSEMBLY

It is not recommended to disassemble the gun unless for general maintenance, or to clear BBs jammed inside the barrel.

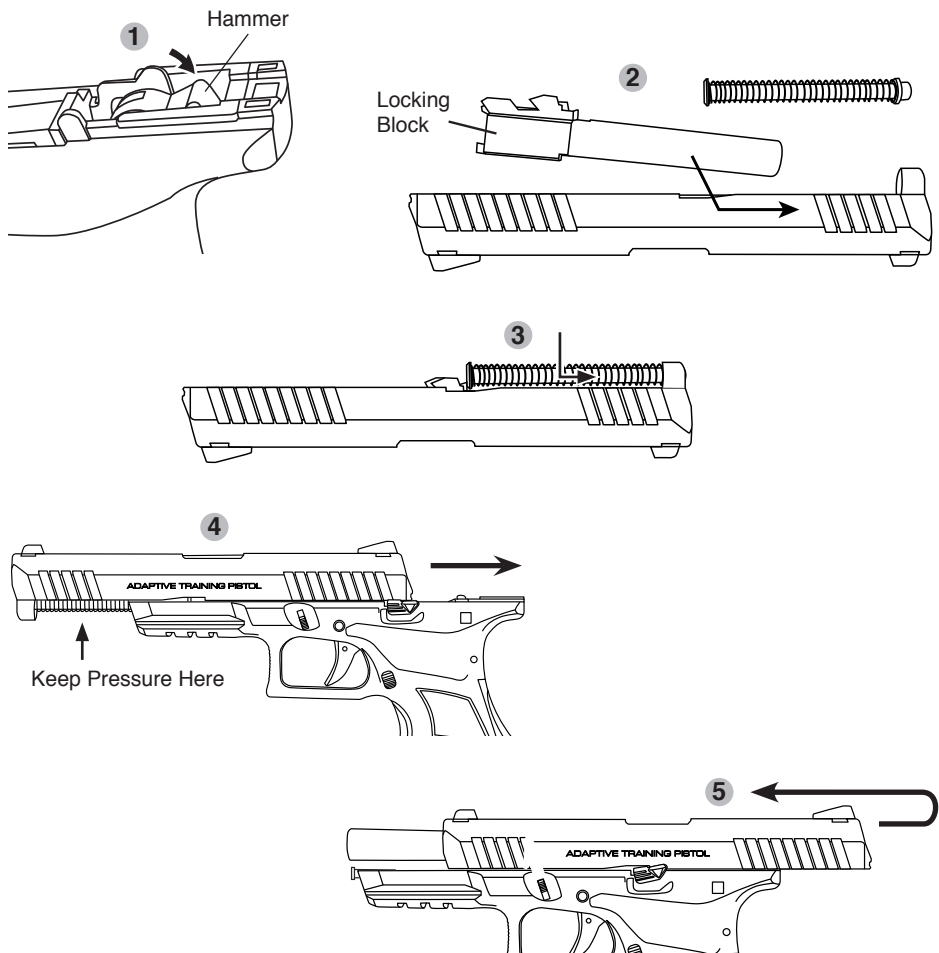
1. Remove the magazine by depressing the magazine catch button.
2. Pull the slide to the rear-most position. Push the slide stop upward to hold the slide in position. Check and clear the chamber of BBs.
For ATP Auto: Turn the selector switch to the neutral position.
3. Push the take-down lever downward from both sides of the frame.
4. While the take-down lever is lowered, pull slide backward to release the slide stop then push the slide forward slowly away from the frame. The guide rod and recoil spring assembly will pop loose.
5. Remove the guide rod and recoil spring assembly.
6. Slide the barrel out from underneath the slide.



ASSEMBLY

1. Make sure the hammer is in the down position.
2. Place the barrel into the slide.
3. Install the guide rod and recoil spring assembly into position.
4. Keep pressure on the guide rod and recoil spring assembly. Put the assembled slide onto the frame rails and glide it toward the rear of the gun.
5. Pull the slide to rear most position and then release.

NOTE: After assembly is completed, cycle the slide back and forth to insure proper assembly.



GENERAL MAINTENANCE FOR KWA GAS BLOW BACK

Green gas is a liquid propellant which tends to dry out the seals and o-rings. With lubricating silicone oil, it will extend the life of the seals and o-rings and prevent gas leaks.

Use only the recommended 100% silicone oil, available for purchase at the Airsoft dealer where you purchased your KWA products. Any other type of lubricant may damage the products.

Lightly lubricate the recoil spring, cylinder and moving parts with a few drops of oil. Lubricating the seals and o-rings are essential. Unload BBs from the magazine. Make sure the magazine is free of gas before lubricating the magazine's charging valve and release valve.

OPERATING UNDER UNUSUAL CONDITIONS

Unusual conditions are defined as any condition requiring special maintenance. Perform maintenance outlined for the climate similar to your operational area.

Extreme Cold:

Operating an Airsoft gas gun in extremely cold temperatures is not recommended. Cold temperatures will cause the Hop-up Bucking to harden, reducing its effectiveness. Gas will not expand properly in cold temperatures, so both the cycling rate and power will be dramatically reduced.

Extreme Heat:

Operating an Airsoft gas gun in extremely hot temperatures is also not recommended. Leaving the gun in direct sunlight for long periods of time, or operating in extremely hot areas will cause the gas to over-expand, damaging the internal workings of the gun. The increase in internal pressure from the expanding gas can also damage the seals and cause leaks in the magazine.

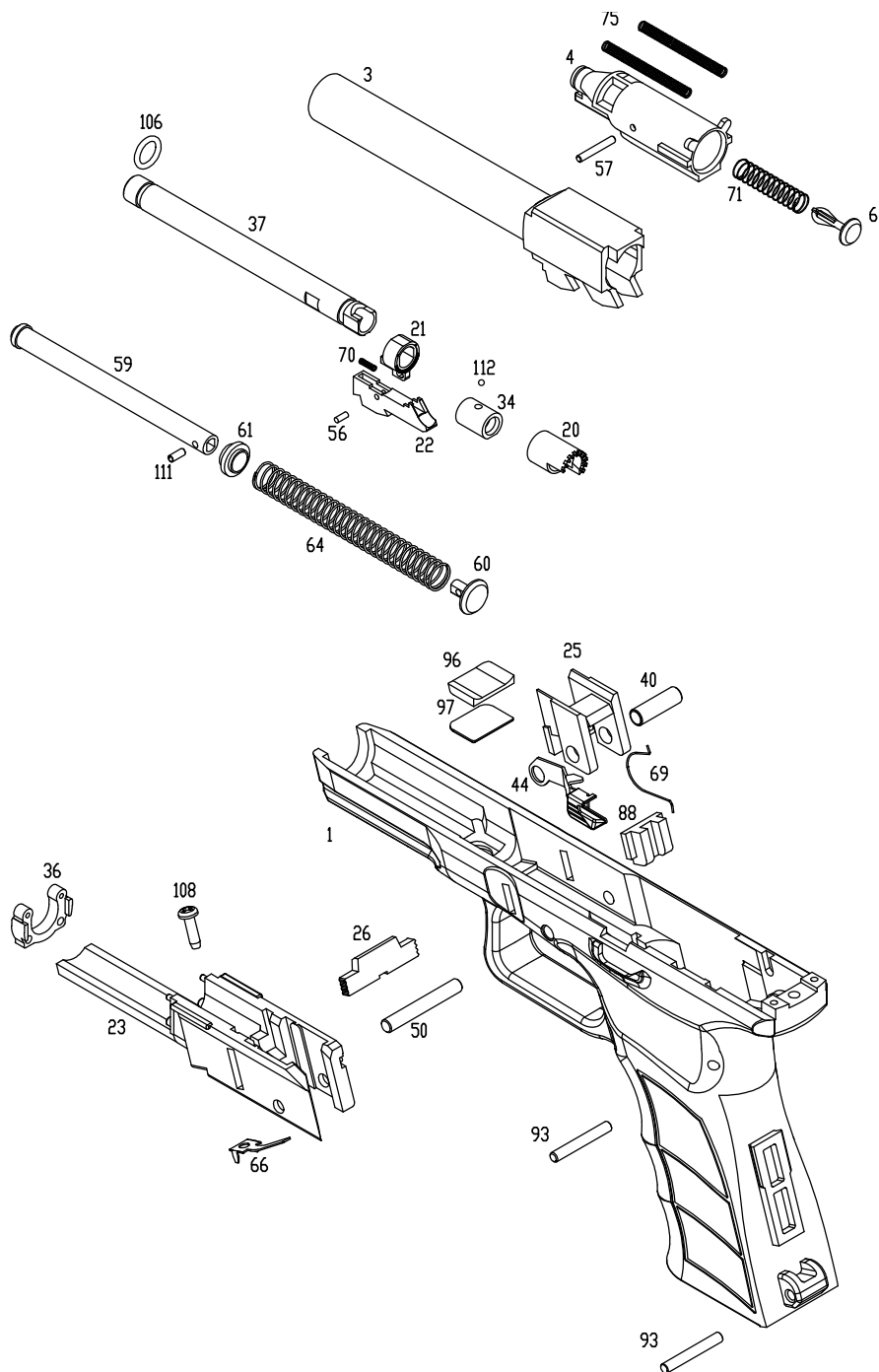
Dust or Sand:

Dust or sand can get into a gas gun and cause malfunctions and/or excessive wear. Keep the gun covered whenever possible. Use lubricant sparingly, as lube naturally attracts dirt and other particles. After use in a dusty area, always field strip the gun (refer to Disassembly Section) and clean any areas you can reach with a soft, lint-free cloth.

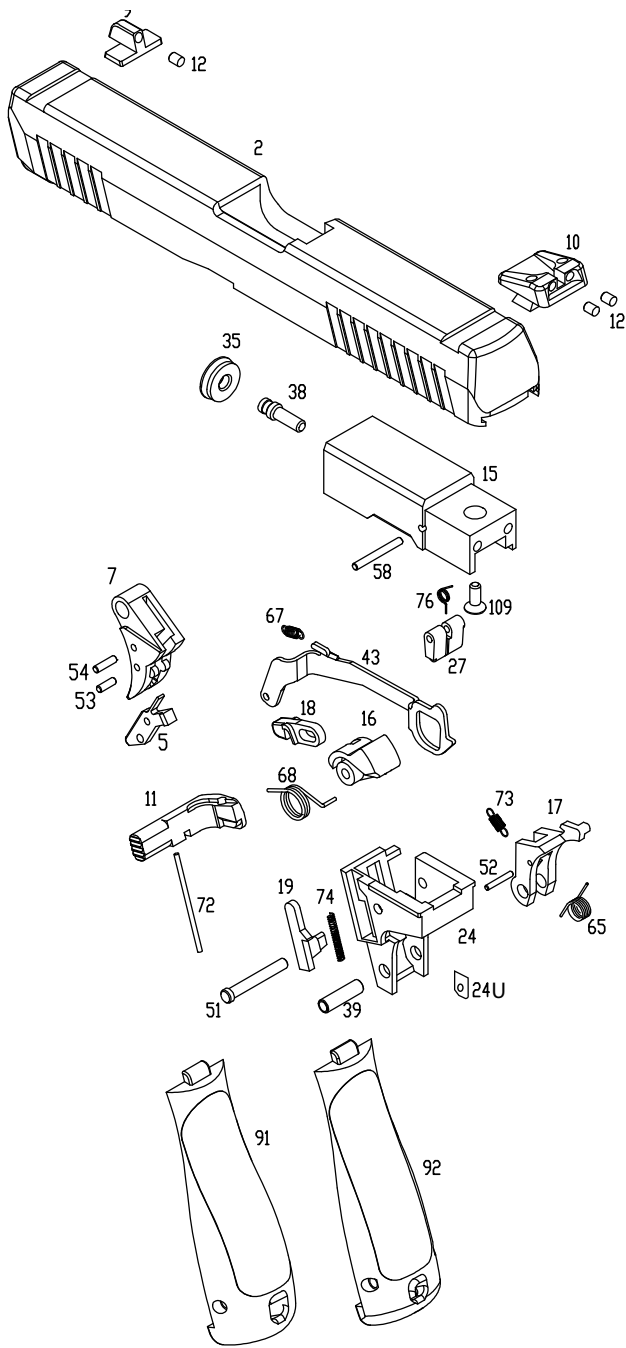
BASIC TROUBLESHOOTING GUIDE FOR PISTOL

SYMPTOMS	POSSIBLE CAUSE	SOLUTIONS
Slide jams / Will not complete cycle	Dry internal	Add silicone to cylinder / main seal / rails
Double feeds BBs into chamber / BB's roll out of barrel	Hop-up adjustment too tight	Release hop-up or replace bucking
BBs will not release from magazine / bent mag lip/ check bb condition	Bent magazine lip	Replace magazine lip
Leaking release valve & charging valve	Dry O-ring	Add silicone oil to valves / Replace vavles
Slide stop engages while shooting BBs	Weak slide stop spring	Adjust tension
Magazine base plate will not lock	Broken base plate lock	Replace base plate lock
Magazine base leaking air	Worn out base seal	Replace magazine base seal
Cylinder will not load BBs into chamber	Broken cylinder tap	Replace cylinder
Trigger will not reset	Worn out trigger spring / trigger bar spring	Replace trigger spring / trigger bar spring

ATP PARTS DIAGRAM



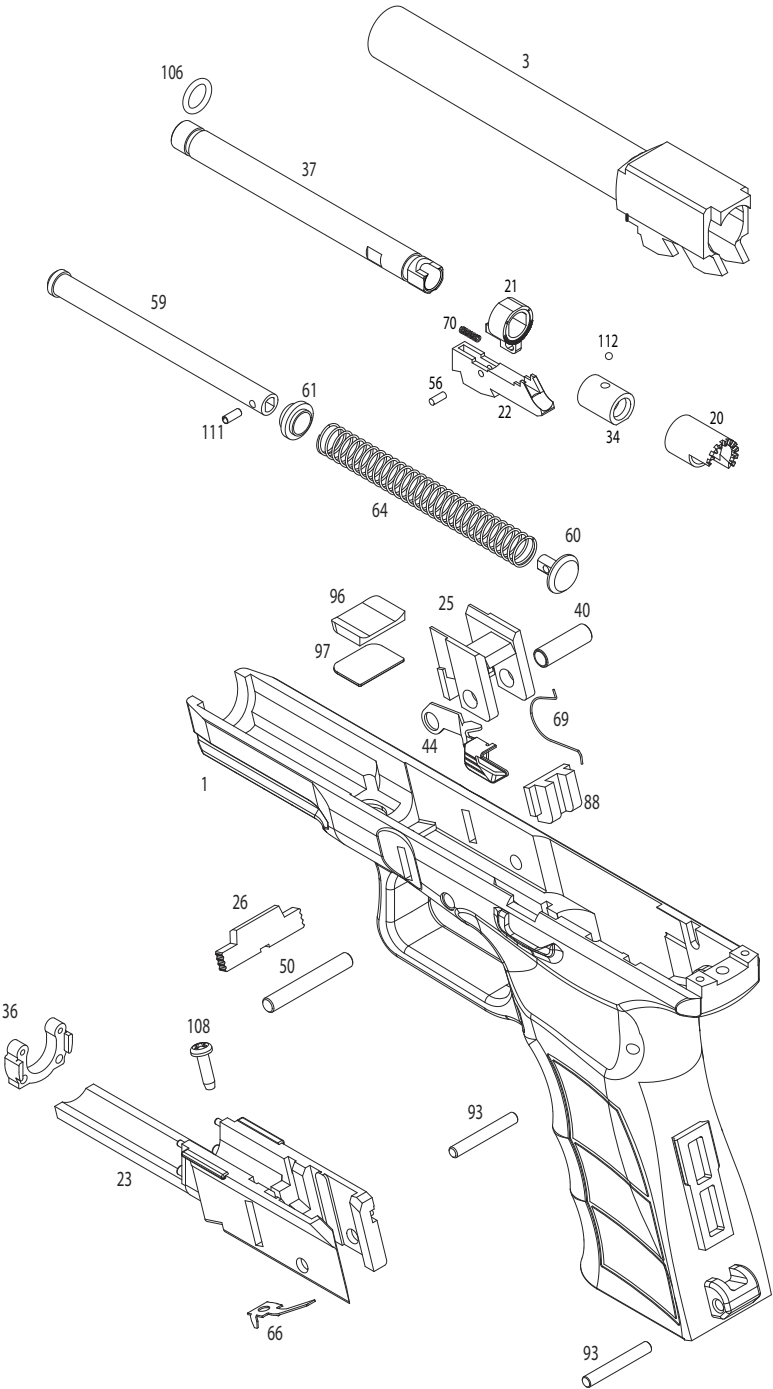
ATP PARTS DIAGRAM



ATP PARTS LIST

Parts #	Description	Parts #	Description	Parts #	Description
ATP-1	Frame	ATP-35	Main Seal	ATP-72	Magazine Catch Spring
ATP-2	Slide	ATP-36	Recoil Buffer	ATP-73	Impact Block Return Spring
ATP-3	Outer Barrel	ATP-37	Inner Barrel	ATP-74	Impact Block Reset Spring
ATP-4	Cylinder	ATP-38	Breech Pin	ATP-75	Cylinder Return Spring x 2
ATP-5	Trigger Safety	ATP-39	Sear Sleeve	ATP-76	Hammer Reset Spring
ATP-6	Jet Nozzle	ATP-40	Trigger Block Sleeve	ATP-88	Mag Well Alignment Block
ATP-7	Trigger	ATP-43	Trigger Transfer Bar	ATP-91	Back Strap (Wide)
ATP-9	Front Sight	ATP-44	Slide Stop Lever	ATP-92	Back Strap (Slim)
ATP-10	Rear Sight	ATP-50	Trigger Block Pin	ATP-93	Back Strap Pin x 2
ATP-11	Magazine Catch	ATP-51	Hammer Pin	ATP-96	Serial Number Plate Stop
ATP-12	Sight Insert	ATP-53	Trigger Safety Pin	ATP-97	Serial Number Plate
ATP-15	Breech	ATP-54	Trigger Transfer Bar Pin	ATP-106	Inner Barrel O-ring
ATP-16	Hammer	ATP-56	BB Feed Ramp Pin	ATP-108	Inner Frame Base Screw
ATP-17	Sear	ATP-57	Jet Nozzle Pin	ATP-109	Breech Screw
ATP-18	Impact Block	ATP-58	Hammer Reset Block Pin	ATP-111	Recoil Spring Guide Pin
ATP-19	Impact Block Reset	ATP-59	Recoil Spring Guide Rod	ATP-112	Hop-Up Ball
ATP-20	Hop up Adjustment Hood	ATP-60	Recoil Spring Guide Cap		
ATP-21	Inner Barrel Sleeve	ATP-61	Recoil Spring Guide Bushing		
ATP-22	Feed Ramp	ATP-64	Recoil Spring		
ATP-23	Inner Frame	ATP-65	Sear Spring		
ATP-24	Hammer Block	ATP-66	Takedown Lever Spring		
ATP-24U	Hammer Block Spacer	ATP-67	Trigger Reset Spring		
ATP-25	Trigger Block	ATP-68	Hammer Spring		
ATP-26	Takedown Lever	ATP-69	Slide Stop Spring		
ATP-27	Hammer Reset Block	ATP-70	Inner Barrel Spring		
ATP-34	Hop-Up Bucking	ATP-71	Jet Nozzle Spring		

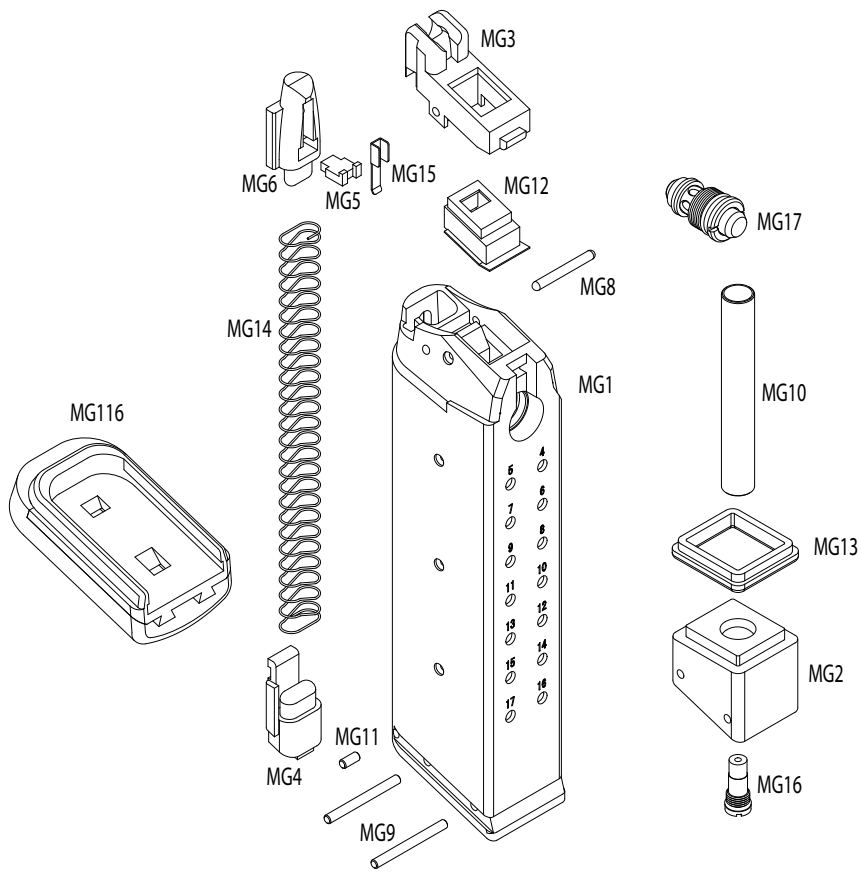
ATP AUTO PARTS DIAGRAM



ATP AUTO PARTS LIST

Parts #	Description	Parts #	Description	Parts #	Description
ATP AUTO-1	Frame	ATP AUTO-30T	Auto Selector Lever	ATP AUTO-66	Takedown Lever Spring
ATP AUTO-2T	Auto Slide	ATP AUTO-31T	Auto Selector Cam Bar	ATP AUTO-67	Trigger Reset Spring
ATP AUTO-3	Outer Barrel	ATP AUTO-32T	Auto Selector Cam	ATP AUTO-68T	Auto Hammer Spring
ATP AUTO-4	Cylinder	ATP AUTO-34	Hop-Up Bucking	ATP AUTO-69	Slide Stop Spring
ATP AUTO-5	Trigger Safety	ATP AUTO-35	Main Seal	ATP AUTO-70	Inner Barrel Spring
ATP AUTO-6	Jet Nozzle	ATP AUTO-36	Recoil Buffer	ATP AUTO-71	Jet Nozzle Spring
ATP AUTO-7	Trigger	ATP AUTO-37	Inner Barrel	ATP AUTO-72	Magazine Catch Spring
ATP AUTO-9	Front Sight	ATP AUTO-38	Breech Pin	ATP AUTO-73	Impact Block Return Spring
ATP AUTO-10	Rear Sight	ATP AUTO-39	Sear Sleeve	ATP AUTO-74	Impact Block Reset Spring
ATP AUTO-11	Magazine Catch	ATP AUTO-40	Trigger Block Sleeve	ATP AUTO-75	Cylinder Return Spring x 2
ATP AUTO-12	Sight Insert	ATP AUTO-43	Trigger Transfer Bar	ATP AUTO-76	Hammer Reset Spring
ATP AUTO-15T	Auto Breech	ATP AUTO-44T	Slide Stop Lever	ATP AUTO-79T	Auto Selector Cam Bar Spring
ATP AUTO-16T	Auto Hammer	ATP AUTO-46T	Auto Left Sear Disconnecter	ATP AUTO-80T	Auto Selector Lever Spring
ATP AUTO-18	Impact Block	ATP AUTO-47T	Auto Selector Lever Hook	ATP AUTO-81T	Auto Selector Lever Hook Spring
ATP AUTO-19	Impact Block Reset	ATP AUTO-50	Trigger Block Pin	ATP AUTO-88	Mag Well Alignment Block
ATP AUTO-20	Hop up Adjustment Hood	ATP AUTO-51	Hammer Pin	ATP AUTO-91	Back Strap (Wide)
ATP AUTO-21	Inner Barrel Sleeve	ATP AUTO-53	Trigger Safety Pin	ATP AUTO-92	Back Strap (Slim)
ATP AUTO-22	Feed Ramp	ATP AUTO-54	Trigger Transfer Bar Pin	ATP AUTO-93	Back Strap Pin x 2
ATP AUTO-23	Inner Frame	ATP AUTO-56	BB Feed Ramp Pin	ATP AUTO-96	Serial Number Plate Stop
ATP AUTO-24	Hammer Block	ATP AUTO-57	Jet Nozzle Pin	ATP AUTO-97	Serial Number Plate
ATP AUTO-25	Trigger Block	ATP AUTO-58	Hammer Reset Block Pin	ATP AUTO-105T	Auto Selector Pin Screw
ATP AUTO-26	Takedown Lever	ATP AUTO-59	Recoil Spring Guide Rod	ATP AUTO-106	Inner Barrel O-ring
ATP AUTO-27T	Auto Hammer Reset Block	ATP AUTO-60	Recoil Spring Guide Cap	ATP AUTO-108	Inner Frame Base Screw
ATP AUTO-28T	Auto Left Sear	ATP AUTO-61	Recoil Spring Guide Bushing	ATP AUTO-109	Breech Screw
ATP AUTO-29T	Auto Right Sear	ATP AUTO-63T	Auto Selector Pin	ATP AUTO-111	Recoil Spring Guide Pin
ATP AUTO-29-1T	Auto Sear Pin	ATP AUTO-64	Recoil Spring	ATP AUTO-112	Hop-Up Ball
		ATP AUTO-65T	Auto Sear Spring	ATP AUTO-113T	Auto Selector Lever Detent Ball

ATP SERIES MAGAZINE DIAGRAM AND PARTS LIST



Parts #	Description
ATP SERIES-MG1	Magazine Body
ATP SERIES-MG2	Magazine Base
ATP SERIES-MG3	Magazine Lip
ATP SERIES-MG4	Magazine Base Plate Lock
ATP SERIES-MG5	Magazine Follower Lock
ATP SERIES-MG6	Magazine Follower
ATP SERIES-MG8	Magazine Lip Pin
ATP SERIES-MG9	Magazine Inner Base Pins x 2
ATP SERIES-MG10	Magazine Expansion Tube

Parts #	Description
ATP SERIES-MG11	Magazine Base Plate Lock Pin
ATP SERIES-MG12	Magazine Nozzle Seal
ATP SERIES-MG13	Magazine Base Seal
ATP SERIES-MG14	Magazine Spring
ATP SERIES-MG15	Magazine Follower Lock Spring
ATP SERIES-MG16	Magazine Charging Valve
ATP SERIES-MG17	Magazine Release Valve
ATP SERIES-MG116	Magazine Base Plate

KWA Performance Industries, Inc.

Copyright © October, 2010 KWA Performance Industries, Inc. All Rights Reserved.