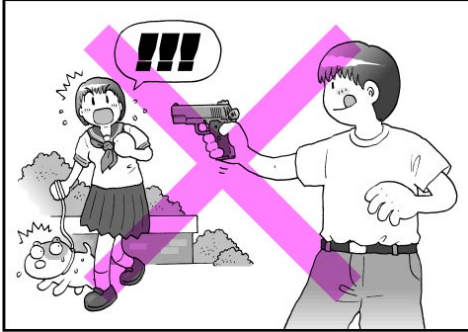


# WARNING: BEFORE USAGE, THE INSTRUCTION MUSE BE READ.

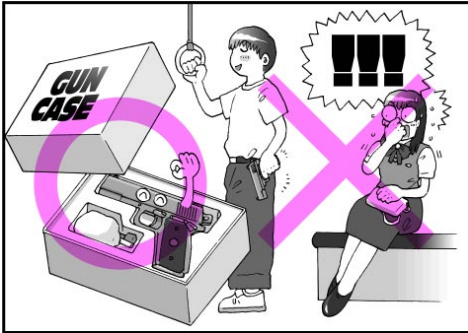
THANK YOU FOR PURCHASING. THE FOLLOWING ATTENTION POINTS AND INSTRUCTIONS MUST BE READ. SHOOTING WITHOUT CAUTION OR USED IMPROPERLY, BLINDNESS OR INJURIES COULD BE LEAD.



DO NOT POINT AT PEOPLE OR ANIMAL.



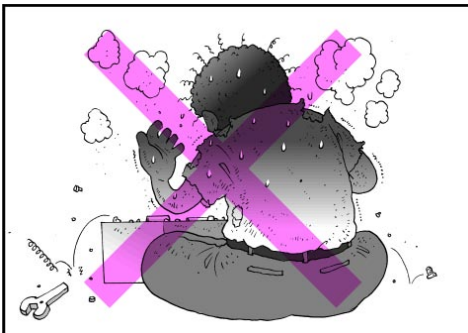
GUN AND GAS MUST NOT BE PLACED IN AREA WHERE TEMPERATURE IS OVER 40 °C



PLACE IN GUN CASE WHEN NOT IN USING OR TRANSPORTING



DO NOT USE GAS WHICH PRESSURE IS OVER 12 Kgs/cm<sup>2</sup>



UNAUTHORIZED RECONSTRUCTION OF AIR SOFT GUN TO STRENGTHEN FIRING FUNCTION IS STRICTLY PROHIBITED.



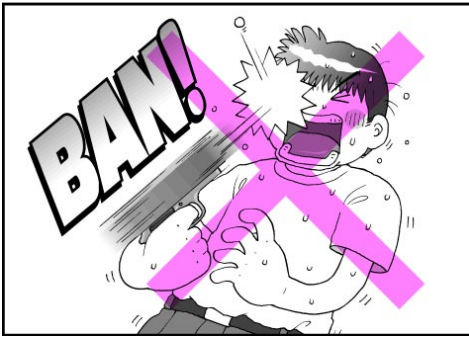
BE CAREFULL WHAT TARGET YOU SHOOT



EYE PROTECTION DEVICE MUST BE EQUIPPED



DO NOT LOAD ANYTHING BUT BB BULLETS.



DO NOT LOOK THROUGH THE BARREL



PLEASE SHOOT IN SAFE PLACE

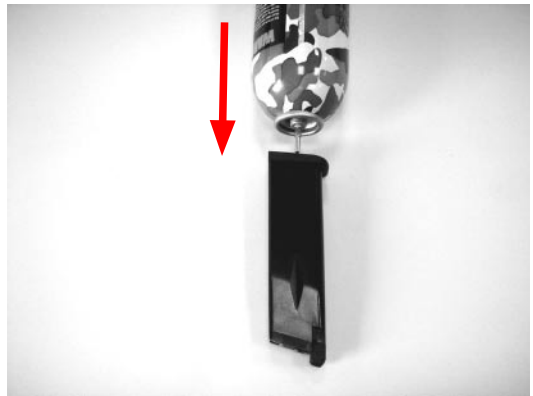
## OPERATION

1. REMOVE THE MAGAZINE



PRESS MAGAZINE CATCH AND REMOVE MAGAZINE

2. FILLING GAS



FILL THE GAS BOTTLE TO THE MAGAZINE IN VERTICAL DIRECTION.

### 3.LOAD BB BULLETS



LOAD BULLETS

### 4.INSERT MAGAZINE



### 5.LOAD



PULL THE SLIDE COMPLETELY TO THE REAR.

### 6.FIRE



PULL THE TRIGGER.

### 7.SAFETY



SAFETY OFF(READY FOR FIRE)



SAFETY ON

# DISASSEMBLY

## 1. REMOVE THE SLIDE STOP

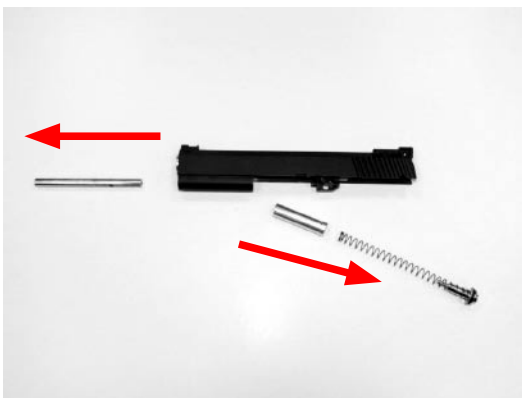


PRESS MAGAZINE CATCH AND REMOVE MAGAZINE. MOVE THE SLIDE REAR UNTIL THE TAKEDOWN NOTCH IS JUST ABOVE THE SLIDE STOP TAB AND REMOVE SLIDE STOP

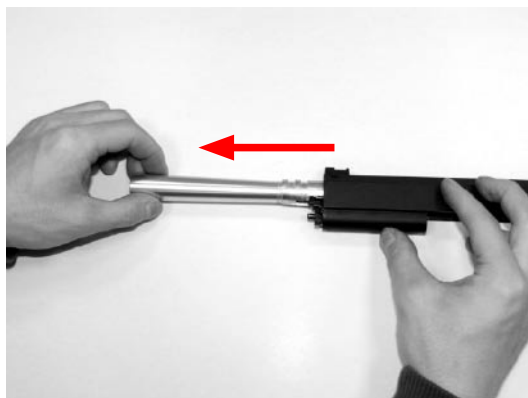
## 2. REMOVE THE SLIDE



## 3. REMOVE THE RECOIL SPRING AND SPRING CAP



## 4. REMOVE THE BARREL



# ASSEMBLY

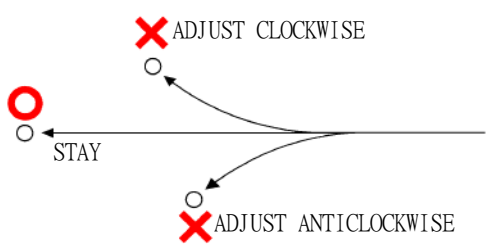
REVERSE THE DISASSEMBLY ORDER

## ADJUST TREJECTORY

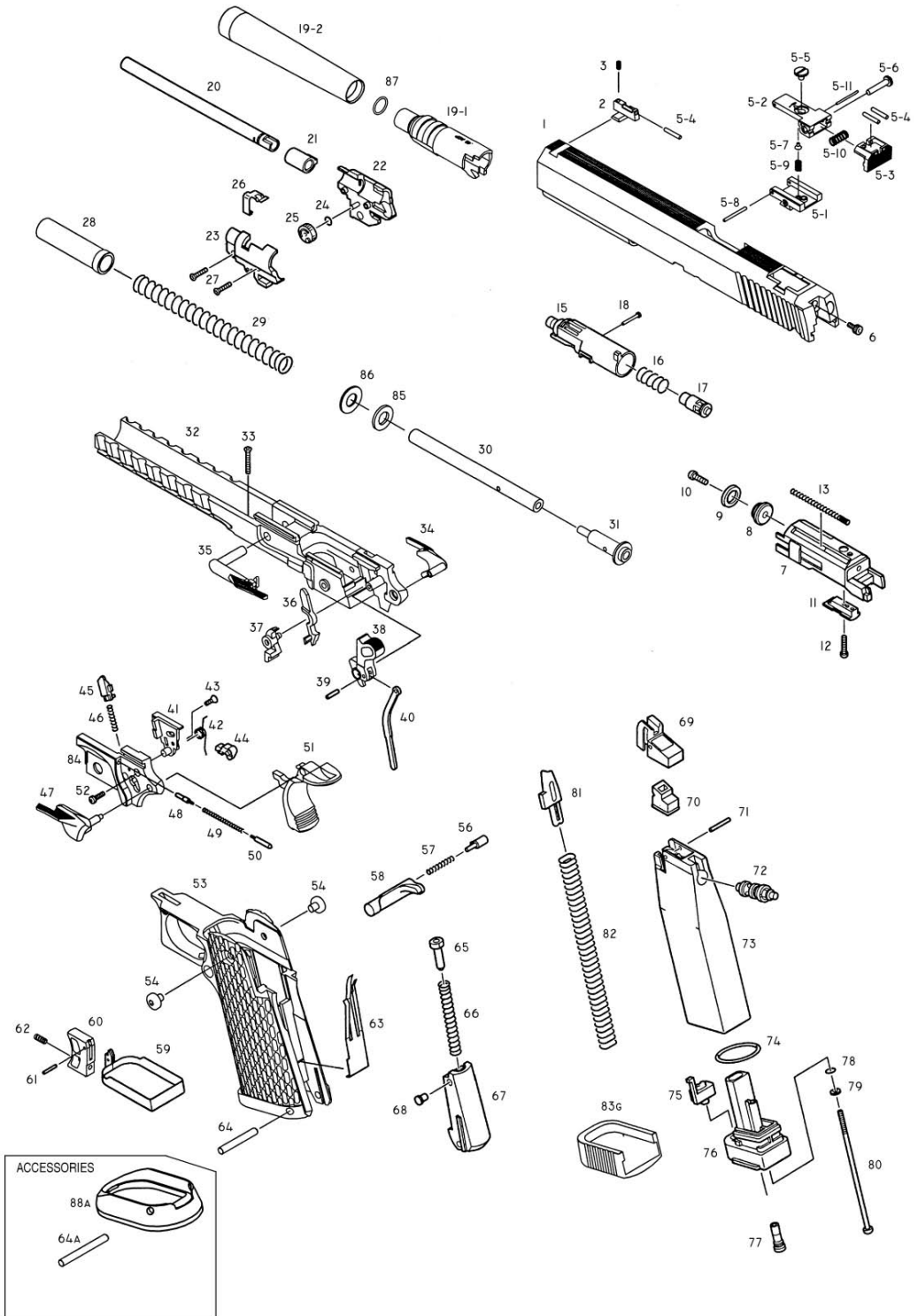


TWIST THE ADJUST DIAL TO ADJUST TEAJECTORY.

PLEASE ADJUST ACCORDING TO TREJECTORT



# KP-06 EXPLODED DRAWING



| NO   | NAME OF PART           | PRICE | NO  | NAME OF PART               | PRICE |
|------|------------------------|-------|-----|----------------------------|-------|
| 1    | SLIDE                  | 1600  | 42  | KNOCKER SPRING             | 30    |
| 2    | FRONT SIGHT            | 150   | 43  | CHASSIS COVER PART SCREW   | 10    |
| 3    | FRONT SIGHT SCREW      | 10    | 44  | KNOCKER(STEEL)             | 100   |
| 4    | CYLINDER SCREW         | 10    | 45  | KNOCKER LOCK(STEEL)        | 100   |
| 5-1  | REAR SIGHT PART 1      | 80    | 46  | KNOCKER LOCK SPRING        | 20    |
| 5-2  | REAR SIGHT PART 2      | 80    | 47  | SAFETY(L)                  | 150   |
| 5-3  | REAR SIGHT PART 3      | 80    | 48  | SLIDE STOP PLUGER          | 50    |
| 5-4  | REAR SIGHT PART 4      | 20    | 49  | SLIDE STOP PLUGER SPRING   | 15    |
| 5-5  | REAR SIGHT PART 5      | 20    | 50  | SAFETY PLUGER              | 50    |
| 5-6  | REAR SIGHT PART 6      | 20    | 51  | GRIP SAFETY                | 240   |
| 5-7  | REAR SIGHT PART 7      | 20    | 52  | CHASSIS COVER SCREW        | 10    |
| 5-8  | REAR SIGHT PART 8      | 10    | 53  | GRIP                       | 800   |
| 5-9  | REAR SIGHT PART 9      | 10    | 54  | GRIP SCREW                 | 20    |
| 5-10 | REAR SIGHT PART 10     | 10    | 56  | MAGAZINE CATCH LOCK        | 30    |
| 5-11 | REAR SIGHT PART 11     | 10    | 57  | MAGAZINE CATCH SPRING      | 10    |
| 6    | FIRING PIN STOP SCREW  | 20    | 58  | MAGAZINE CATCH             | 120   |
| 7    | PISTON                 | 400   | 59  | TRIGGER BAR                | 150   |
| 8    | RING HEAD              | 40    | 60  | TRIGGER                    | 240   |
| 9    | RING                   | 20    | 61  | TRIGGER PIN                | 10    |
| 10   | RING HEAD SCREW        | 10    | 62  | TRIGGER ADJUST SCREW       | 20    |
| 11   | PISTON PART            | 30    | 63  | SEAR PIN                   | 100   |
| 12   | PISTON PART SCREW      | 10    | 64  | HOUSING PIN                | 50    |
| 13   | CYLINDER RETURN SPRING | 20    | 65  | HAMMER SPRING PLUGER       | 30    |
| 15   | CYLINDER               | 150   | 66  | HAMMER SPRING              | 70    |
| 16   | CYLINDER VALVE SPRING  | 20    | 67  | HAMMER SPRING HOUSING      | 120   |
| 17   | CYLINDER VALVE         | 20    | 68  | PLUGER STOP                | 40    |
| 18   | CYLINDER VALVE STOP    | 20    | 69  | BB LIP                     | 60    |
| 19-1 | OUTTER BARREL A        | 300   | 70  | MAGAZINE GASKET            | 80    |
| 19-2 | OUTTER BARREL B        | 300   | 71  | BB LIP PIN                 | 10    |
| 20   | INNER BARREL           | 180   | 72  | VALVE                      | 150   |
| 21   | RUBBER CHAMBER         | 80    | 73  | MAGAZINE CASE              | 400   |
| 22   | CHAMBER COVER(R)       | 140   | 74  | O-RING                     | 20    |
| 23   | CHAMBER COVER(L)       | 140   | 75  | MAGAZINE SPRING RETAINER   | 20    |
| 24   | O-RING                 | 10    | 76  | MAGAZINE BASE              | 180   |
| 25   | ADJUST DIAL            | 20    | 77  | FILLING VALVE              | 70    |
| 26   | ADJUST LEVER           | 50    | 78  | O-RING                     | 10    |
| 27   | CHAANBER COVER SCREW   | 10    | 79  | WASHER                     | 10    |
| 28   | RECOIL PLUG            | 200   | 80  | MAGAZINE BASE SCREW        | 20    |
| 29   | RECOIL SPRING          | 60    | 81  | FOLLOWER                   | 30    |
| 30   | RECOIL SPRING GUIDE A  | 100   | 82  | FOLLOWER SPRING            | 50    |
| 31   | RECOIL SPRING GUIDE B  | 150   | 83G | MAGAZINE BOTTOM            | 120   |
| 32   | CHASSIS                | 600   | 84  | CHASSIS COVER              | 200   |
| 33   | CHASSIS SCREW          | 10    | 85  | RECOIL SPRING GUIDE BUFFER | 20    |
| 34   | SAFETY(RIGHT)          | 150   | 86  | WASHER                     | 20    |
| 35   | SLIDE STOP             | 200   | 87  | OUTTER BARREL O-RING       | 10    |
| 36   | DISCONNECTOR(STEEL)    | 150   |     | ACCESSORIES                |       |
| 37   | SEAR(STEEL)            | 120   | 64A | HOUSING PIN                | 50    |
| 38   | HAMMER(STEEL)          | 300   | 88A | MAG LIP                    | 500   |
| 39   | HAMMER PIN             | 10    |     |                            |       |
| 40   | HAMMER STRUT           | 50    |     |                            |       |
| 41   | CHASSIS COVER PART     | 80    |     |                            |       |

# KP-06 MANUAL

# KJWORKS